



# SN1 series

**SN1-25~250 TONS**

**C FRAME MECHANICAL PRESS**



SN1-25•35•45•60•80•110•160•200•250  
SN1-25•35•45•60•80•110•160•200•250  
SN1-25•35•45•60•80•110•160•200•250

# Quality / Productivity / Safety

## C Frame Mechanical Press

Driving shaft of self feeder. (Option)

The oil gauge of ear box.

Knockout Device.(Option)

Pneumatic die cushion.(Option)

Crank angle indicator.

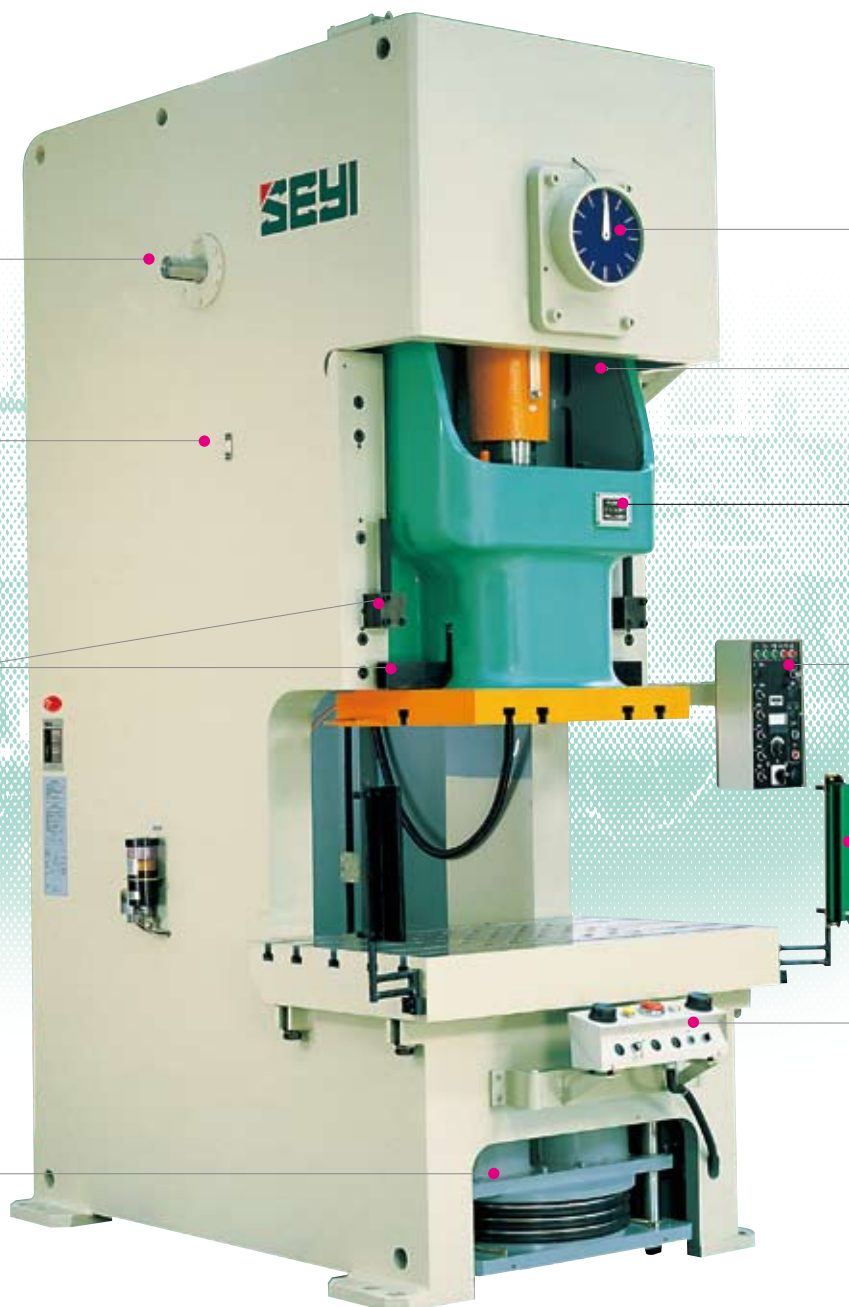
Connecting rod lubricate box. (SN1-60~250)

Digital die height indicator. (SN1-60~250)

Electric control panel.

Photo electric safety device. (Option)

Operation Panel.



# Features



- **High torque, low noise wet clutch and brake.**
- **Rigid frame with less deflection.**
- **High accuracy transmission gears and high rigidity crank ensure press long life and accuracy.**
- **Forced Lubrication system with default monitor ensures the operation reliability.**
- **User-friendly design and all-function electric control system enable the accessories to attach easily.**
- **High accuracy meets the CNS 1st level.**



## High Precision Transmission Gear

The high accurately machined gear system provides smooth and silent operation.

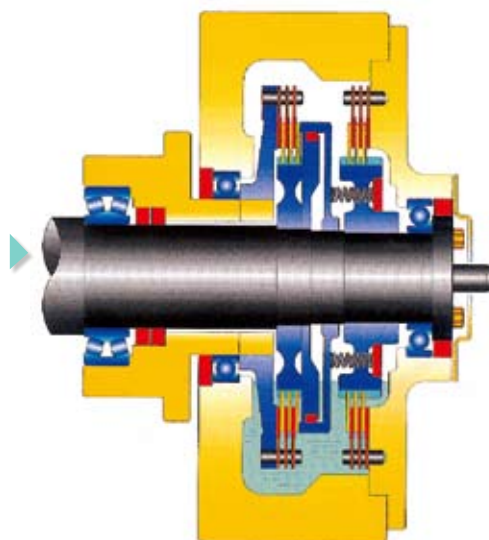
## High Quality Crank Shaft

The strong crank shaft with outstanding rigidity ensures that accuracy can be maintained under qualified standard and extends the life of tooling.



## High Torque Wet Clutch and Brake

- Multiplate, low initial design for quick response operation.
- High intermittent allowance for robot automatic operation.
- No pollution and low noise correspond the future environmental requirement.



# Features

## Motorized Slide Adjusting Device (SN1-60~250) ◀

The motorized slide adjusting device is adopted with a thin brake motor and operated with push buttons. It provides stable positioning accuracy and quick adjustment.

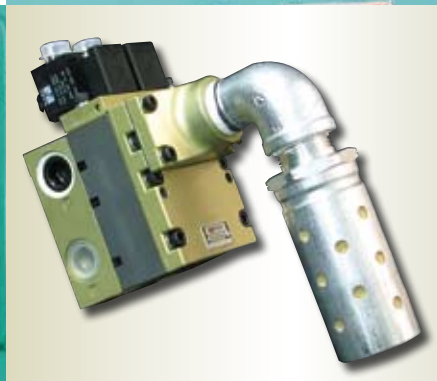
## Auto Lubrication System ▶

The auto lubrication system with default monitor ensures high reliable operation.



## Easy-to-use Slide Adjusting Device (SN1-25~45) ▶

Simple, reliable manual slide adjuster with 0.1mm increment indicator.



## Dual Safety Valve ◀

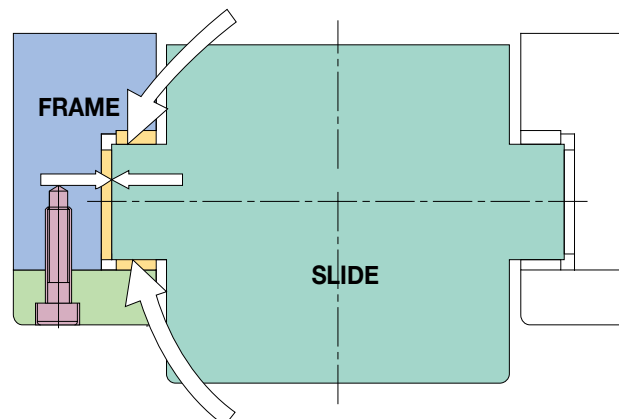
The interlock mechanism on the dual valve keeps the clutch and brake from mis-actuation when valve is default.

## Digital Die Height Indicator (SN1-60~250) ▶

Motorized slide adjusting device fitted with 0.1mm increment digital die height indicator.

## Long Hexagonal Gibs ▶

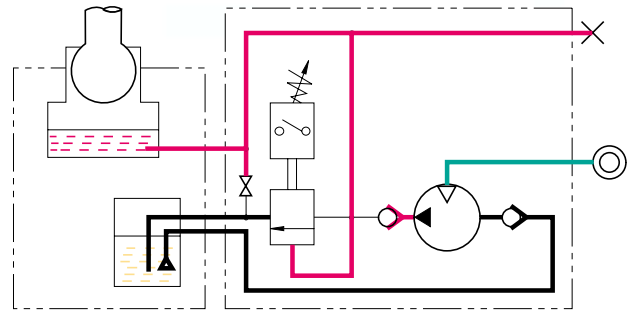
Durable alloy brone lining fixed directly on the frame without the defect of loosing adjusting bolts. Durable lining can also maintain high accuracy and extend the life of tooling.





### Pendent Control Cabinet

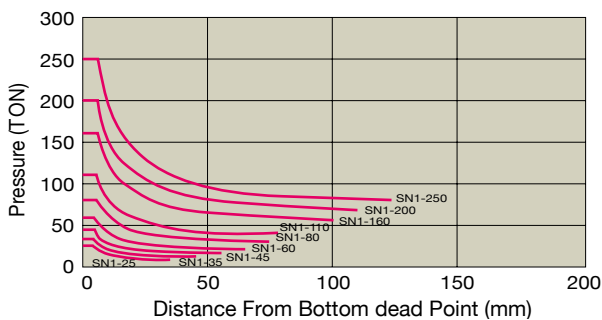
User-friendly design for simple and easy operation.



### Hydraulic Overload Protector

The hydraulic overload protector is installed to prevent the overloading from exceeding the rating capacity tonnage and protect press and tooling from damage. The simple resetting process makes the restart operation easily.

### Stroke and Pressure Curve



### Rating Point

Model	STROKE(mm)	TONNAGE RATING POINT(mm)
SN1-25	80	3.2
SN1-35	90	3.2
SN1-45	110	3.2
SN1-60	130	4
SN1-80	150	5
SN1-110	180	5
SN1-160	200	6
SN1-200	220	6
SN1-250	250	6

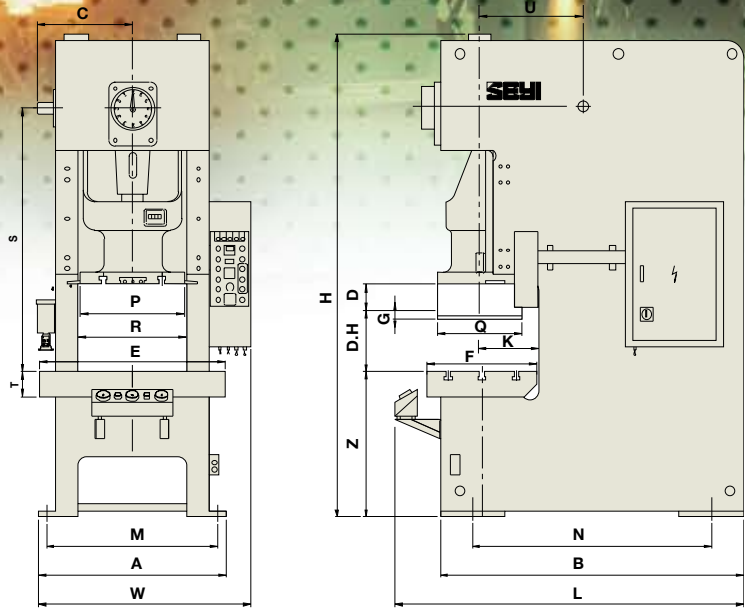
### General Attachments

- Hydraulic Overload Protector.
- Manual Slide Adjusting Device.(SN1-25~45)
- Electrical Slide Adjusting Device.(SN1-60~250)
- Die Height Indicator. (SN1-60~250)
- Counter Balancers of Slide.
- Rotary Cam Limit Switch.
- Antirepeat Safety Device.
- Magnetic Strokes Counter.
- Miss Feed Detector Socket.
- Pneumatic Ejector.
- Air Outlet.
- Maintance Tools.

### Optional Attachments

- Power Take-off Shaft.
- Pneumatic Die Cushion.
- Photoelectric Safety Device.
- Variable Speed Motor. (Inverter)
- Quick Die Change Device. (Q.D.C.)
- Preset Counter.
- Knockout Device.
- Foot Switch.
- Rubber Mount.

# Specification



## Specifications and dimensions *SN1-160,200,250 are without shank holder*

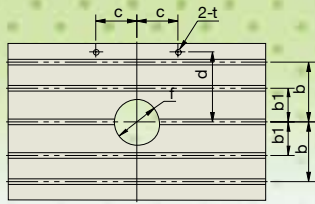
Model	SN1-25			SN1-35			SN1-45			SN1-60			SN1-80			SN1-110			SN1-160			SN1-200			SN1-250					
	S	H	P	S	H	P	S	H	P	S	H	P	S	H	P	S	H	P	S	H	P	S	H	P	S	H	P			
Capacity	tf			25			35			45			60			80			110			160			200			250		
Length of stroke	(D) mm			80	50	35	90	60	40	110	70	45	130	80	50	150	100	60	180	110	70	200	130	80	220	150	90	250	180	100
	Stroke per minute	Fixed speed	S.P.M.	90	110	140	80	100	130	70	90	120	60	80	100	60	80	100	50	70	90	40	60	80	35	50	65	30	45	55
		Variable speed		70	80	80	60	70	80	50	60	80	40	55	70	40	50	65	35	45	60	30	35	50	25	30	40	22	30	30
			110	140	180	95	130	170	85	120	160	75	110	150	75	100	140	65	90	125	50	70	100	45	60	85	40	50	70	
Tonnage rating point	mm			3.2	2.3	2.3	3.2	2.3	2.3	3.2	2.3	2.3	4	2.3	2.3	5	3.2	3.2	5	3.2	3.2	6	4	4	6	4	4	6	4	4
Die height	(D.H)mm			230	200	200	250	220	220	270	240	240	300	270	270	330	300	300	350	320	320	400	360	360	450	400	400	450	400	400
Adjustment of slide	(G)mm			50			50			60			70			80			90			100			110			120		
Area of slide	(P×Q)mm			330x250			380x300			430x350			480x400			560x460			650x520			720x580			860x650			960x720		
Diameter of shank hole	mm			ø38.1			ø50.8			ø50.8			ø50.8			ø50.8			ø50.8			ø65			ø65			ø65		
Area of bolste	(ExF)mm			700x320			780x400			840x440			900x520			1050x600			1150x680			1250x760			1400x840			1500x900		
Thickness of bolster	(T)mm			85			100			115			130			140			155			165			180			180		
Height of bolster	(Z)mm			800			800			800			900			900			900			900			1000			1000		
Inside measurement frame	(R)m.m			388			486			516			544			614			670			730			900			970		
Frame Gap	(K)mm			170			210			230			270			310			350			390			430			460		
Position of P.T.O. Shaft	(C×S×U) mm			351x983x383			403x1068x405			428x1158x437			450x1285x478			507x1445x512			596x1630x614			646x1809x686			756x2067x726			796x2262x844		
Main motor	Fixed speed	HPxP	5x4			5x4			5x4			7.5x4			7.5x4			10x4			15x4			20x4			25x4			
	Variable speed		5x4			5x4			5x4			7.5x4			10x4			10x4		15x4		15x4		20x4		20x4			25x4	
Motor for slide adjustment	HPxP			-			-			-			0.5x4			0.5x4			0.5x4			1x4			1x4			1x4		
Foot size	(AxB)mm			720x1058			830x1125			890x1210			940x1315			1050x1480			1160x1680			1300x1985			1480x2113			1560x2400		
Position of anchor bolts	(MxN)mm			620x878			730x925			790x1010			840x1115			950x1230			1060x1380			1180x1655			1360x1753			1440x2000		
Floor space required	(WxLxH)mm			875x1335x 2060			985x1400x2185			1035x1485x 2290			1085x1620x 2540			1195x1785x 2755			1310x1985x2990			1510x2290x3270			1690x2415x3725			1770x2705x4005		
Accuracy	CNS 1st			CNS 1st			CNS 1st			CNS 1st			CNS 1st			CNS 1st			CNS 1st			CNS 1st			CNS 1st			CNS 1st		

\*Materials and specifications are subject to change without notice.

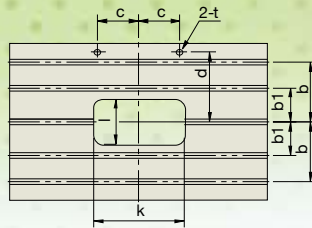
## Die Cushion (Option)

Capacity	tf	2.2	2.2	3.5	3.5	6	8	10	14	14
Length of stroke	mm	50	50	70	70	80	90	100	110	120
Area of pad	mm	295x210	295x210	340x234	340x234	410x260	480x300	540x340	640x440	740x540

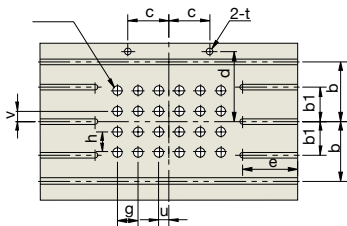
\*Materials and specifications are subject to change without notice.



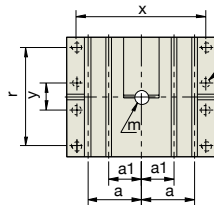
SURFACE OF BOLSTER  
(STANDARD)



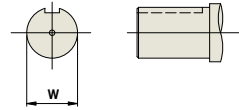
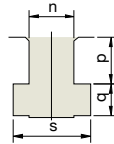
SURFACE OF BOLSTER  
(WITH RECTANGULAR HOLE)



SURFACE OF BOLSTER  
(WITH DIE CAUSHION)



SURFACE OF RAM



SIZE OF T-SLOT

## Dimensions of bolster plate and ram

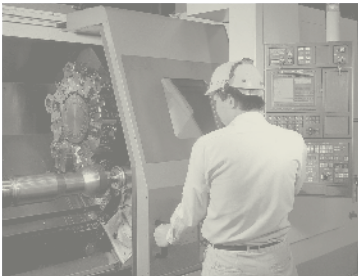
(The cushion pin holes of SN1-25,35,45,60,200 are center located on bolster)

Model	SN1-25	SN1-35	SN1-45	SN1-60	SN1-80	SN1-110	SN1-160	SN1-200	SN1-250	
<b>a</b>	105	130	140	150	160	180	260	300	350	
<b>a1</b>	-	-	-	-	-	-	160	170	200	
<b>b</b>	100	125	140	150	180	210	290	320	350	
<b>b1</b>	-	-	-	-	-	-	165	180	200	
<b>c</b>	130	130	150	150	150	150	200	200	250	
<b>d</b>	135	170	185	200	250	300	340	380	410	
<b>e</b>	-	210	220	240	270	280	290	320	320	
<b>f</b>	ø100	ø110	ø130	ø150	ø180	ø200	ø220	ø250	ø270	
<b>g</b>	65	65	75	75	75	90	100	100	100	
<b>h</b>	60	90	100	100	75	90	100	100	100	
<b>i (R.LxF.B)</b>	5x3	6x4	8x6	5x3	6x4	7x5	5x3	5x3	6x4	
<b>j</b>	ø26	ø32	ø32	ø26	ø26	ø32	ø26	ø26	ø32	
<b>k</b>	260	400	540	220	360	500	200	300	440	
<b>l</b>	130	200	270	110	180	250	100	150	220	
<b>m</b>	ø50.8	ø50.8	ø65	ø50.8	ø50.8	ø65	ø38.1	ø50.8	ø65	
<b>n</b>	22	28	28	22	28	28	22	22	28	
<b>p</b>	23	30	30	23	30	30	23	23	30	
<b>q</b>	16	20	20	16	20	20	16	16	20	
<b>r</b>	-	-	620	-	-	550	-	-	480	
<b>s</b>	38	48	48	38	48	48	38	38	48	
<b>t</b>	ø26	ø30	ø30	ø26	ø30	ø30	ø22	ø30	ø30	
<b>u</b>	0	45	50	0	37.5	0	0	0	50	
<b>w</b>	-0 ø35 -0.03	-0 ø35 -0.03	-0 ø40 -0.03	-0 ø40 -0.03	-0 ø40 -0.03	-0 ø70 -0.03	-0 ø70 -0.03	-0 ø70 -0.03	-0 ø70 -0.03	-0 ø70 -0.03
<b>x</b>	370	560	850	340	480	750	290	400	630	
<b>y</b>	80	100	160	70	90	140	70	90	130	
<b>z</b>	4-ø18	4-ø23	8-ø23	4-ø18	4-ø18	8-ø23	4-ø18	4-ø18	8-ø23	

P.S. : The T-Slot on slide only for SN1-160 above.

\*Materials and specifications are subject to change without notice.

Top Development ■ Pressing Ahead



China Factory



Headquarters



Los Angels



Tennessee



### SHIEH YIH MACHINERY INDUSTRY CO., LTD.

**HEADQUARTERS** NO.446, Nan Shang Rd., Kueisan Hsiang, Taoyuan, Taiwan  
TEL: +886-3-352-5466 FAX: +886-3-352-5488  
www.seyi.com

### XIE YI TECH MACHINERY(CHINA) CO., LTD.

**KUNSHAN FACTORY** TEL: +86-512-5740-7900 FAX: +86-512-5740-7899  
www.seyi.com.cn

**DONGGUAN BRANCH** TEL: +86-769-8502-8531 FAX: +86-769-8502-8530  
www.seyi.com.cn

### SEYI-AMERICA, INC.

**CALIFORNIA** TEL: +1-909-839-1151  
FAX: +1-909-839-1150  
www.seyiamerica.com

**TENNESSEE** TEL: +1-931-455-7700  
FAX: +1-931-455-6092  
www.seyiamerica.com

### SEYI Presses Europe GmbH

**EUROPE** www.seyi-europe.com